

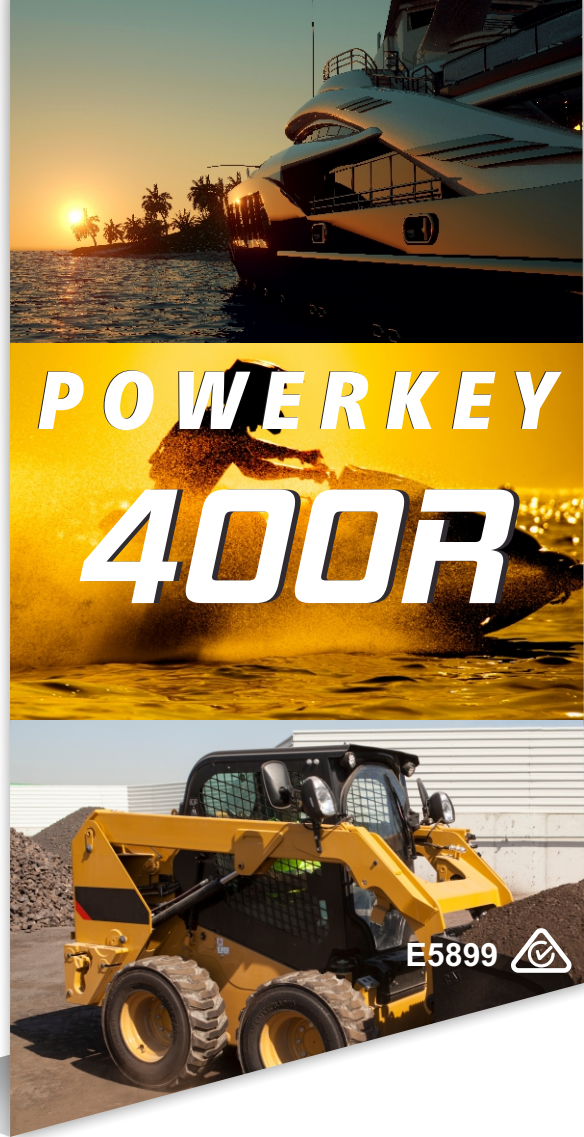


The POWERKEY 400 is in the family of keypads that gives a more traditional switch appearance to the panel. There is one indicator for every button, which is on when the corresponding function is on.

The POWERKEY 400 also offers vast flexibility to the OEM and end user. The Re-legendable Keypads have a pocket above each button that accepts a clear plastic insert. The insert can be silk screened or pad printed with text or symbols. All inserts are supplied blank. This unique keypad allows for customers to customise keypads on their own production floor. A versatile choice for all your needs.

**STANDARD FEATURES:**

- "Plug & Play" Installation
- Backlit for night viewing
- Available in 8Gang
- Customisable Inserts



# POWERKEY 400R



## VERSATILE - SMART - AFFORDABLE

 RS-485

[WWW.DIGITALSWITCHING.COM.AU](http://WWW.DIGITALSWITCHING.COM.AU)

[SALES@DIGITALSWITCHING.COM.AU](mailto:SALES@DIGITALSWITCHING.COM.AU)

## MECHANICAL

Keypad Connector	Deutsch DT04-4P
Mating Connector	Deutsch DT06-4S
Switch Life	3 Million operations
Mounting Studs	#10-32 CDS-510 phosphor bronze, electroplated bright tin
Keypad	Silicone rubber with polyurethane hardcoat

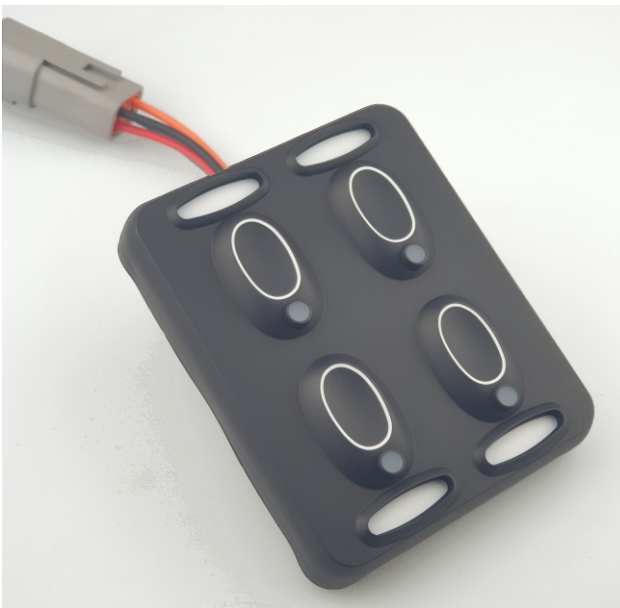
## ELECTRICAL

Supply Voltage	9-28 Volts DC
Standby Current	<10-30mA
Communication	RS-485 (Proprietary)

Operating Temperature	-20°C to +85°C
Storage Temperature	-20°C to +85°C
UV Protection	UBVB 400 hours
Chemical Resistance	EET, Engine Cleaner, Isopropyl Alcohol, Suntan Lotion, Multi-Purpose Cleaner, Orange Citrus Cleaner
Ingress Protection Rating	IP68
Approvals	CE

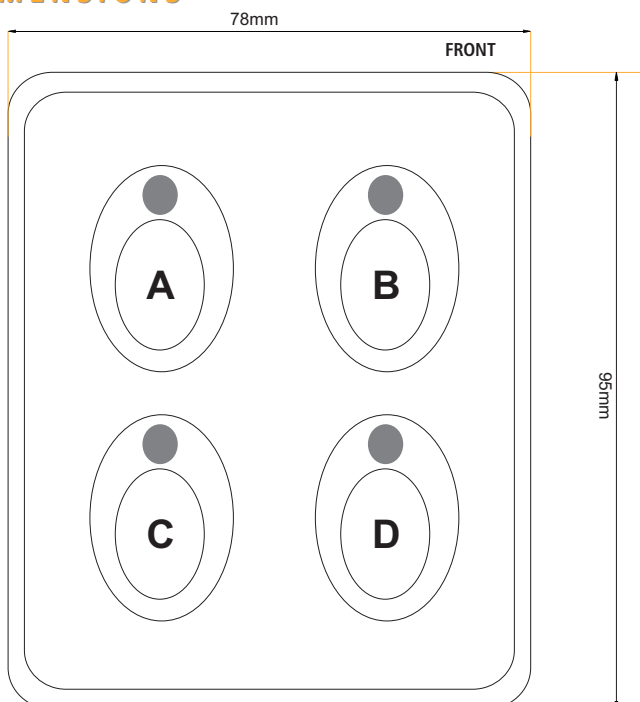
## OTHER FEATURES

Size MM	95 x 78 x 27
Weight	135g



Clear Inserts

## DIMENSIONS

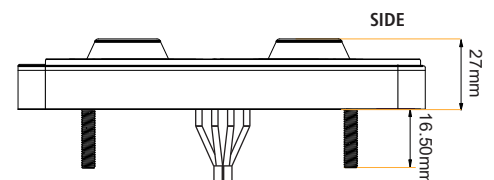


\* Diagrams are NOT to Scale

## MOUNT ON A FLAT SURFACE ONLY

Part Number:	DSS-PK400R
Nut Size*:	10-32 UNF S/S
Washer Sizes:	M5 Spring Washer S/S, M5 Flat Washer S/S
Torque Maximum:	7 +/- 1 in. lbs

\* DO NOT USE NYLOC NUTS



Connection Wire Lengths  
From PCB: 304.8mm

### RS-485 KEYPAD PIN-OUT

Pin	Wire Colour	Function
1	GREEN	TxRx-
2	YELLOW	TxRx+
3	BLACK	GROUND
4	RED	POWER (12V)