

Reverse Polarity Sensor



Part No. DSS-RPS

When Safety Matters

- Super Reliable
- Easy to Install
- No Maintenance Required

FEATURES

We all know that safety is paramount and we strive to adopt new practices to reduce the chance of electrocution and increase safety, thus making the Reverse Polarity Sensor fundamental for all vehicle, RV and vessel owners.

This innovative device works by sensing the polarity of the power input and, if correct, it will then energise a relay or contact permitting power to flow through to the vehicles or vessels switchboard. In certain circumstances it will automatically trip the safety switch at the supply end (source).

This makes it completely safe for the end user and helps protect any sensitive electronic devices that would have been subjected to a reversed polarity.

The Reverse Polarity Sensor is one of the only devices on the market today which is fully compliant, approved and tested.

So start protecting your vehicle today!

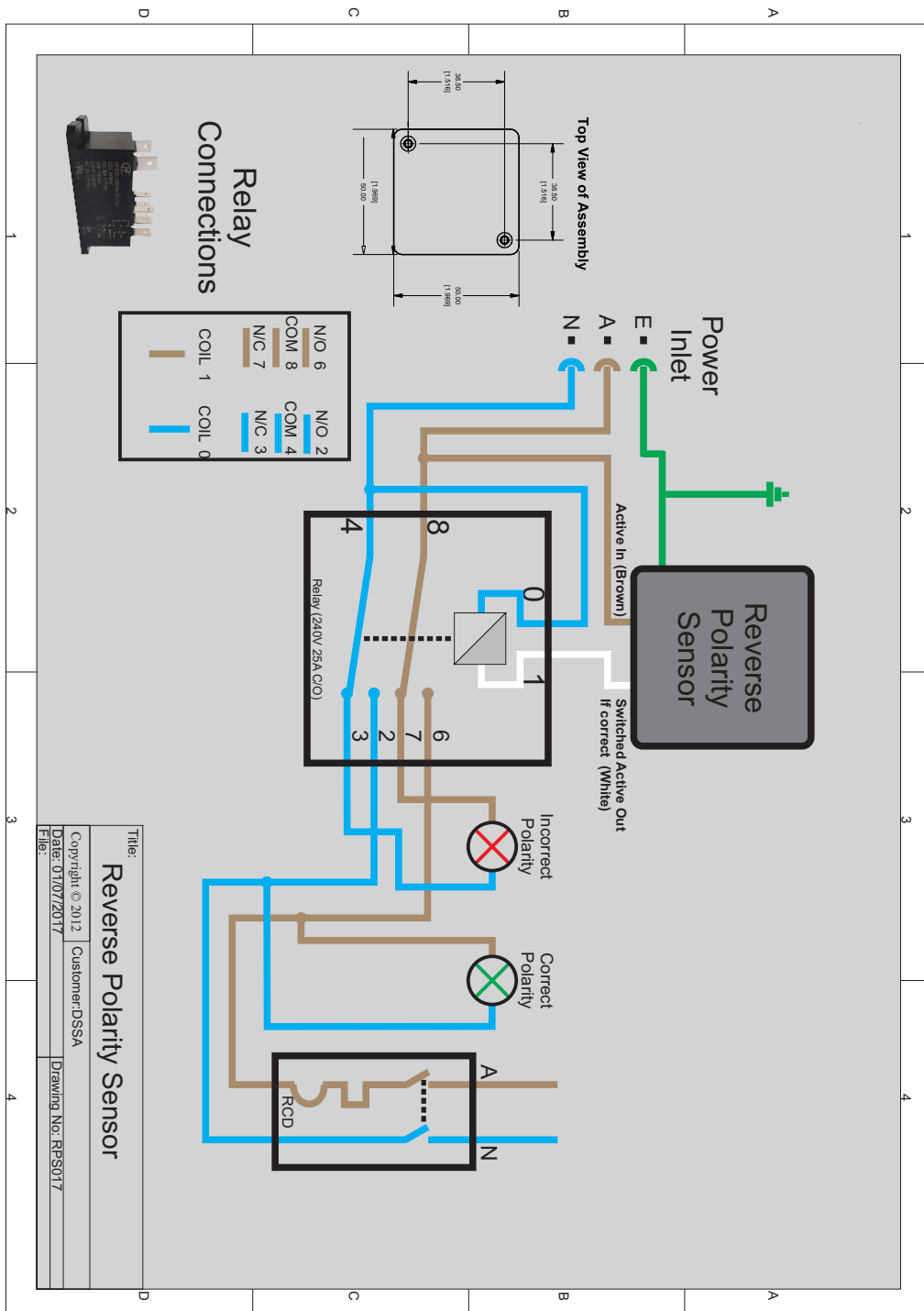


Specifications

- No Maintenance Required - Super Reliable - Easy to Install - Incorporates the Latest Technology.
- Fully Sealed Robust Device - Suitable for All Mobile Units - Complies With AS/NZS 3100:2002
- Maximum Switching of 500mA @ 240VAC

The Reverse Polarity Sensor must be installed by a licensed electrician. This compact device requires minimum space and is recommended to be installed along with the transfer relay (supplied) at the vehicle or vessels switchboard location.

Diagram



Warning:
This device must be installed by a suitably licensed electrician to meet the standards of AS3000 - 2007, and AS3004.2: 2008. If used outside Australia or New Zealand, please consult local authorities.

Manufactured and complies with: AS/NZS 3100:2002 Inc A1-3. Certificate No. SAA172810.

Maximum switching of 500mA @ 240V ac.
The polarity sensor can be applied under the AS3004.2: 2008 SS.5.3.2 a.c. (Protection against reversal of polarity in the supply lead) and can also be used for NSCV Part C Section 5 Subsection 5B (Electrical) Paragraph 4.7.1.c (Shore Supply). Please see wiring diagram for specific connectivity.

