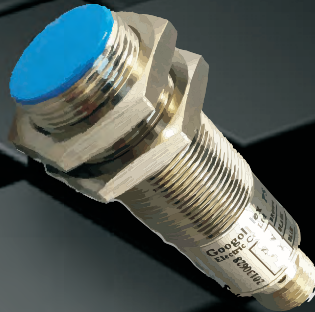


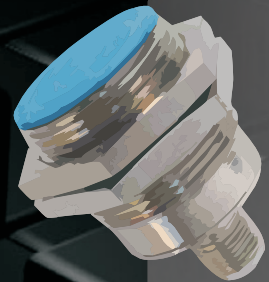
Proximity Switches



Magnetic Series



M Series



M Short Series

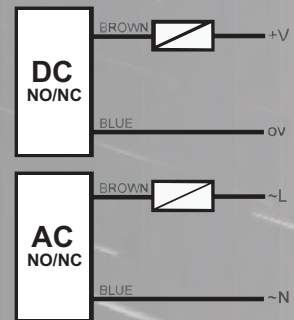
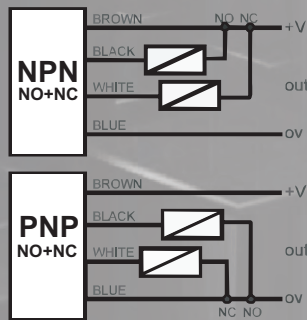
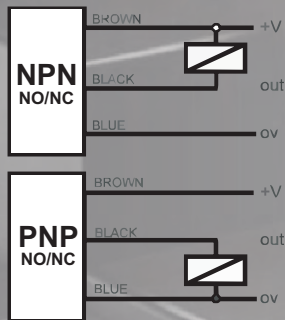
Proximity Switches

Proximity Sensors have a high reliability and long functional life. Due to the absence of mechanical parts and lack of physical contact between sensor and the sensed object.

Our Tubular and Square type Inductive and Capacitive Proximity Sensors are self-contained, solid-state switching devices. They sense the presence of metal objects without touching them.

- Widely applied in measuring, counting, RPM measuring in mechanism, chemical, paper manufacture light industry, light trucks and racing applications.
- Protection rate: Ip67
- Water Resistant
- Over-current Protection
- Inductive and Capacitive Sensors
- Standard Sensing Object: Ferrous Metals

Output



Connection

Series Connection



Parallel Connection



Mounting

Inductive proximity application:

1. Mounting distance varies with measuring objects (Iron, Stainless Steel, Brass, Copper and Aluminum).
2. Set mounting distance equal 80% sn excepts when sensor applies in measuring mounting frequency or operating in high speed circum stance then set mounting distance equal to 50%sn.
(see diagram for sn)

